

YSOFT SAFEQ 6 RELEASE NOTES MU29

CONTENT

| | | |
|----------|--|----------|
| 1 | New Features and Benefits | 2 |
| 1.1 | YSoft Payment Machine | 2 |
| 1.2 | Embedded Terminal for Lexmark | 2 |
| 1.3 | DeeControl 2.5 | 2 |
| 1.4 | Additional print status snapshots from YSoft be3D eDee printer | 3 |
| 2 | Fixes and Improvements | 4 |
| 2.1 | Terminals, User Interfaces | 4 |
| 2.2 | Printing | 4 |
| 2.3 | YSoft Payment System | 4 |
| 2.4 | Installation and Administration | 4 |
| 2.5 | Product extensions (formerly known as customizations) | 5 |
| 3 | Known Limitations | 6 |
| 3.1 | Installation and deployment | 6 |
| 3.2 | Accounting and reporting | 6 |
| 3.3 | Management interface | 7 |
| 3.4 | Embedded, External and Mobile Terminals | 7 |
| 3.5 | Printing and print processing | 8 |
| 3.6 | Scan Workflows | 9 |
| 3.7 | Printing through Mobile Print Server | 9 |
| 3.8 | YSoft SafeQube 2 | 9 |
| 3.9 | YSoft be3D eDee Print Management Solution | 9 |

1 NEW FEATURES AND BENEFITS

1.1 YSOFT PAYMENT MACHINE

YSoft Payment Machine now supports Lebanese and Georgian currencies.

1.2 EMBEDDED TERMINAL FOR LEXMARK

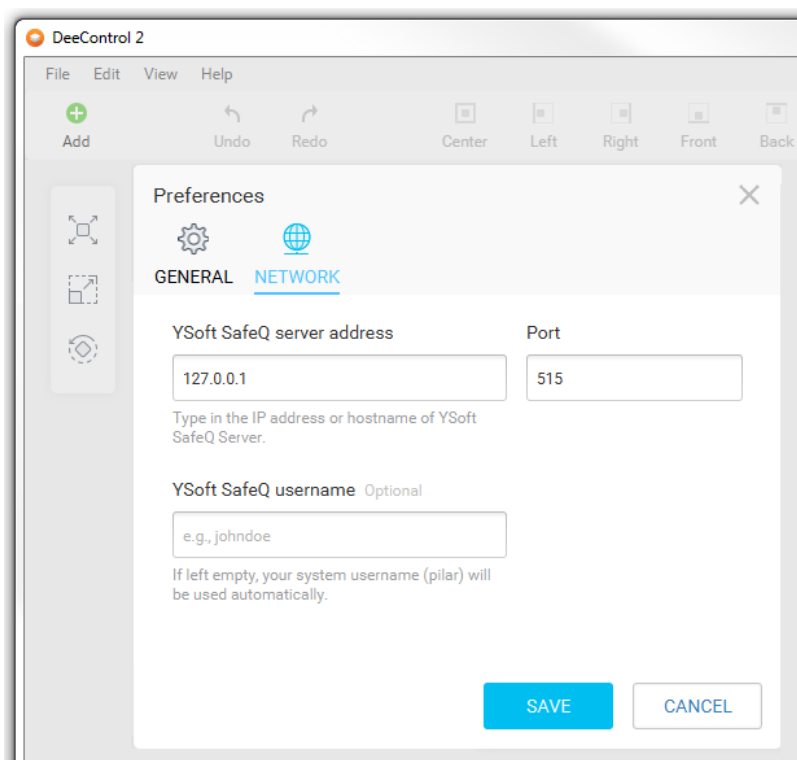
Automated Scan Workflows are now available on Embedded Terminal for Lexmark. There are two unsupported limitations: file folder browsing and list type of user input. The Embedded Terminal for Lexmark is compatible with eSF 3.0/4.0/5.0/6.0 platform devices and supports authentication, print, scan, billing codes, YSoft Payment System and device dependent accounting.

1.3 DEECONTROL 2.5

A new version, DeeControl 2.5, is now available as a free download for Microsoft Windows and Mac OS X platforms on Partner Portal and the Y Soft website.

Main enhancements:

- YSoft SafeQ username can be configured - dedicated for BYOD used for sending 3D jobs to SQ server
- Dutch localization - user interface, user guide, quick guide



1.4 ADDITIONAL PRINT STATUS SNAPSHOTS FROM YSOFT BE3D EDEE PRINTER

If the print job is 5 hours or longer, the user can receive additional snapshots of the print job's progress (5% and 50% of print completion). The job owner is now better informed about the 3D print job's progress and can react if needed.



2 FIXES AND IMPROVEMENTS

2.1 TERMINALS, USER INTERFACES

The order of default languages for YSoft SafeQ Embedded and External Terminals has changed. The system property "supported-lang-priority" now has a new default value: "En, De, Es, Fr, Ja, Cs". It results in a lower priority of double byte languages leading to higher performance of YSoft Terminal Professional 4.

The user can once again open End User Interface when a quota with a zero limit is assigned to him.

LDAP settings are no longer modified in the device when installing Embedded Terminal for Xerox and the "enableXeroxAccessDefinition" property is set to "Application registry".

Installation of Embedded Terminal for Fuji Xerox now automatically disables the device internal logging of the user's ID card number.

It could happen that the USB card reader as part of YSoft Terminal Professional 4 stopped working when connected to Konica Minolta devices. It has been fixed.

2.2 PRINTING

The FlexiSpooler now skips invalid XML characters in the print job's XCPT header and doesn't stop printing for this reason.

2.3 YSOFT PAYMENT SYSTEM

User detail data is now correctly shown to the user in the YSoft Payment System web interface.

A better error message is now displayed in the YSoft Payment System web interface when the administrator creates an entitlement and the user wasn't found.

Cash Desk users can now open a user's account even when the user was already deleted in the web interface but the money in the user's account hasn't been deleted yet. The System creates the user's account again automatically.

YSoft Payment System's service is once again called "YSoft Payment System" in the operating system's services window.

2.4 INSTALLATION AND ADMINISTRATION

Terminal Server newly utilizes a certificate's validation procedure during the establishment of the HTTPS communication when secured WebDAV scan data storage type is used. A valid certificate must be installed in the server where Terminal Server is installed otherwise Terminal Server won't start.

Embedded Terminal for Fuji Xerox can be once again installed and uninstalled on Fuji Xerox Apeos devices from Management Interface.

A Web report and an exported Microsoft Excel report now match when a custom report is created.

Administrators can no longer include blank spaces in the beginning or at the end of a YSoft SafeQ External Terminal's serial number in Management Interface which causes a malfunction of the Terminal.

The YSoft SafeQ database validator no longer writes database credentials in the log file.

Upgraded YSoft SafeQ servers from version 5 to version 6 with YSoft SafeQ Terminal Professional v3.5 no longer falls into off-line mode after starting.

A better error message is written in the log file when Management Server can't connect to the YSoft SafeQ database due to incorrect credentials.

The wrong password is no longer logged in case a user mistypes when logging into Management Interface.

Microsoft Excel files generated for scheduled reports exported from Management Interface now have a better name and includes the name of the filter.

A description of the system property "finishingOptionsPriority" has been fixed. It now includes the right name of the Finishing options property: "enableFinishingOptions".

YSoft SafeQ installation package now includes a new version third party component Infinispan 9.4.6 that fixes possible crashes of Site Servers in a clustered environment.

System properties in the "SMTP settings" part of the "spoc.conf" (Spooler Controller configuration file) can now include the "[EMPTY]" value. It tells Site Services that really empty values should be used for the property instead of a non-empty value received from the central settings in Management Interface.

2.5 PRODUCT EXTENSIONS (FORMERLY KNOWN AS CUSTOMIZATIONS)

No items.

3 KNOWN LIMITATIONS

3.1 INSTALLATION AND DEPLOYMENT

- Backup of YSoft SafeQ 6 (configuration, database and more) can be done using the documented procedure. Please follow the product documentation for backup and restore.
- FlexiSpooler in server mode and Spooler Controller components must be installed on the same server.
- After updating FlexiSpooler in client mode, the Offline Print capability needs to build a new list of last used printers.
- PostgreSQL database server uses GMT time zone by default. If YSoft SafeQ management server is in different time zone, PostgreSQL time zone has to be set accordingly.
Description: Administrative Guide / Installation and deployment / Software / Configure PostgreSQL time zone for correct print job and report data
- Automated upgrade from YSoft SafeQ 5 does not support migration of YSoft SafeQ Payment System and YSoft SafeQ Mobile Print Server.
 - When the Mobile Print Server is a part of the YSoft SafeQ 5 system, automated upgrade of other components is still available. However, the MPS service in YSoft SafeQ will need to be configured manually.
 - When the YSoft SafeQ Payment System is a part of the YSoft SafeQ 5 system, a special manual upgrade must be provided. Contact your Y Soft Regional Sales Manager for additional information.

An automated upgrade is possible only when using the latest YSoft SafeQ 5 Maintenance Update. More details on the upgrade process can be found in the Administrative Guide in the article Upgrade from YSoft SafeQ 5.

3.2 ACCOUNTING AND REPORTING

Online accounting:

- Online accounting of direct prints is not supported.
- Online accounting of fax is not supported.
- Online print accounting with coverage accounting correction is not supported.
- Online accounting with the YSoft SafeQ Mobile Terminal is not supported.
- The batch accounting of secure prints is not supported.

Offline accounting:

- Combination of offline accounting and Payment System is not supported.
- Offline accounting of copies using smart cable is not supported.

Local print monitoring (Local Monitor) is not supported. The price list section "Local" remains on the web interface for the backward compatibility.

Estimated price of a print job does not change after modification of finishing options.

3.3 MANAGEMENT INTERFACE

- Page with printers does not support searching by the direct queue when the name is put into the Basic filter or into the keyword field in the Advanced filter. This functionality was removed due to performance reasons. Searching by direct queue will be reintroduced via a dedicated field in the Advanced filter.

3.4 EMBEDDED, EXTERNAL AND MOBILE TERMINALS

- Legacy Terminal Professional v3.5 is supported with the following limitations.
 - Scan Workflows are not available.
 - When using online accounting, price and number of pages displayed on the terminal might be different from the actually accounted numbers. Accounted information is correct, terminal displays only estimation from the parser.
- Finishing options are not supported on the YSoft SafeQ Embedded Terminal for Samsung.
- Scan Workflows are available on devices from the following manufacturers. Please refer to the product documentation for more details.
 - FujiXerox
 - Konica Minolta / Develop
 - OKI
 - Ricoh
 - Sharp
 - Toshiba
 - Xerox
 - EPSON
 - HP
- Basic finishing options (Simplex/Duplex, BW/Color and Number of copies) are available on devices from the following manufacturers. See product documentation for details.
 - FujiXerox
 - Konica Minolta
 - Lexmark
 - OKI
 - Ricoh
 - Sharp
 - Toshiba
 - Xerox
 - EPSON
 - HP
- Advanced finishing options (Stapling, Punching, Folding) are available on devices from the following manufacturers. See product documentation for details.

- Konica Minolta
 - Ricoh
 - Sharp
 - Xerox
 - FujiXerox
- Any jobs submitted via Mobile Print or AP Connector do not support advanced finishing options.
 - Not all of the finishing options are supported on every device, for detailed information please see the documentation.
 - YSoft SafeQ 5 Early Access features such as "Extended accounting of colors" and "Public user accounting" are currently not supported in Y Soft SafeQ 6.
 - YSoft SafeQ Mobile Terminal does not support pay-for-print capability
 - YSoft SafeQ Mobile Terminal is not currently supported for use with other hardware terminals (Terminal Ultralight, Terminal Professional v3.5 and Terminal Pro 4).
 - Advanced finishing options are supported only when the YSoft Mobile Terminal is used on devices with Embedded Terminals.
 - Advanced finishing options are not supported on Terminal Pro 4.
 - When deploying a software update package on Terminal Pro 4, a change of IP address in Terminal Pro 4 is required prior to starting the software update package deployment. The IP address of Management server is required. The change can be made via SSH client and connection to Terminal Pro 4.
 - Terminal Pro 4 does not support Payment System.
 - Terminal Pro 4 does not support Stop on zero.
 - Scan workflows don't support user inputs and scan settings on Terminal Pro 4.
 - Scan workflows with hardware terminals (Terminal Ultralight, Terminal Pro 4) requires a Windows-based shared scan destination folder to transfer scanned files. Linux or other operating systems based shared folders are not supported.
 - A user is not notified about the unavailable print job while using local spooler (CBPR) when Print All function on the authentication page is enabled and used.

3.5 PRINTING AND PRINT PROCESSING

- YSoft SafeQ desktop Interface with FlexiSpooler for MacOS is not supported.
- Desktop interface notifications from Rule-Based Engine work only when the FlexiSpooler is in client mode.
- Estimated price for the job is not displayed in the YSoft SafeQ desktop Interface.
- Offline print is not supported in the following Embedded Terminals:
 - Lexmark
 - Sharp
 - Samsung

3.6 SCAN WORKFLOWS

- The output format, Compact PDF, is not working properly in combination with any processing step. The scanned file is split into multiple pages.

3.7 PRINTING THROUGH MOBILE PRINT SERVER

- Character encoding of the incoming email must match the encoding configured on the server containing FlexiSpooler used by Mobile Print Server in order to avoid a job name with corrupted characters.
- After adjusting the page range, preview of PDF jobs sent via AP Connector is not generated from that page.

3.8 YSOFT SAFEQUBE 2

- Only Konica Minolta, FujiXerox, Lexmark, Ricoh, Sharp and Xerox Embedded Terminals are supported with SafeQube 2.
- Scanning on FujiXerox via SafeQube 2 is not supported.
- Near, Far Roaming and Offline Print are not supported with SafeQube 2.
- Only TLS 1.0 and SSL 3 are supported on SafeQube 2. MFDs with TLS 1.1 or TLS 1.2 only won't work via a secured channel, but some of them can be configured to use HTTP.
- An administrator can not change SSL certificate on SafeQube 2.
- Double-byte characters are not supported.
- All ports must be configured above 1024.

3.9 YSOFT BE3D EDEE PRINT MANAGEMENT SOLUTION

- Card self-registration is not supported.
- Billing codes are not supported.
- Quotas are not supported.