

# YSoft SafeQ 6 MU7 - Release notes

## 1. New Features and Benefits

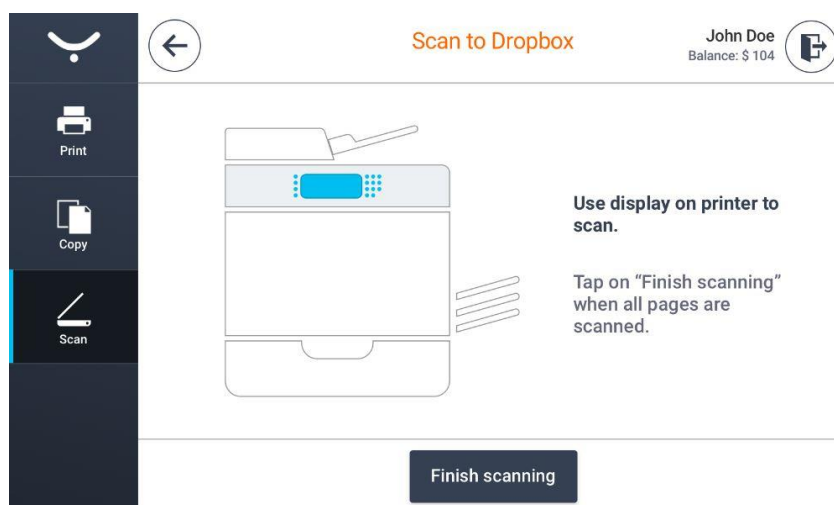
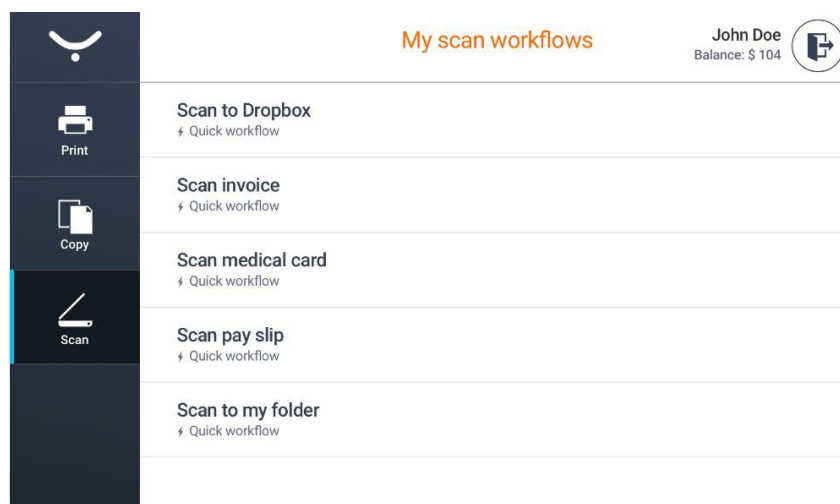
### New: Need to use Terminal Ultralight and YSoft SafeQ 6 together?

Not a problem. Terminal Ultralight, used typically for printing and copying is now compatible with the YSoft SafeQ 6.

Existing YSoft SafeQ 5 customers can upgrade to YSoft SafeQ 6 and still use the Ultralight Terminal for copying and printing. However, scanning features for Ultralight Terminal are not completed and not supported yet.

### New: Quick Scan Workflows are newly available for Terminal Pro 4

For those familiar with Terminal Professional v3.5 (the legacy predecessor of Terminal Pro 4), this isn't anything new. Thanks to the smart architecture of scan workflows, you can run **Quick Scan Workflows** on Terminal Pro 4 with devices that support native scanning into a network folder (SMB or FTP). **Quick Scan Workflows** are perfectly suited when no user input is required.



**New: OKI sXP2 terminal has been moved out of Early Access Program and is part of a standard license**

Formerly under an Early Access Program license, the newer sXP2 terminal for OKI MFDs is now available for general use.

**Improved: Terminal Pro 4 operability is even faster now**

Terminal Pro 4 is a flagship of the new YSoft SafeQ 6 platform and is being carefully improved based on operational experience. MU7 brings visible acceleration of the operability in case that it works in conjunction with the on-line accounting.

**Improved: Travellers with FlexiSpooler in client mode can print better and faster at any location**

When users are travelling, their workstations with the YSoft SafeQ client app installed, the workstations client app can recognize the nearest SafeQ server and use it for printing. This brings a much higher efficiency to the print process: jobs do not have to travel long distances which typically are costlier and take longer to process. With this MU7 update, the workstation app can read new IP addresses of the site server in a better way using the less known DHCP option 9 (which must be configured in the network infrastructure).

**Improved: Length of the Cost Centre identification field for LDAP replication is doubled**

Based on our customer experience, we decided to enhance the length of Cost Centre ID number for LDAP replication purposes. The old limit (9 digits) was doubled to 18 digits.

**Improved: Security of YSoft SafeQ installation files has increased, the SHA256 certificates are used now.**

To improve the security of YSoft SafeQ and to be in line with security standards, we have started to use the SHA256 certificate for the YSoft SafeQ installation files instead of the previously used SHA1 certificate.

**Improved: More convenient printing for Mac users**

AP Connector enables much easier printing for users running OS X or iOS devices. AP Connector, when configured from the MU7 release, now works even better - after users log in for the first time, they can store their credentials and do not need to enter them again unless they log out.

## Fixes in MU7

- **Administrators** are already using the autocomplete features when working with the YSoft SafeQ management interface. Time is precious and the items can be filtered quickly as you type. This was not the case for older Internet Explorer 10, and that has been fixed.
- **Administrators** who need to install applications to a different drive than C: can now use D:, E: or any other drive. Wherever you would like to keep SafeQ, you won't experience an issue with LDAP replicator logging.
- **Users** can configure finishing with vendor print driver as they are used to. The print jobs were sometimes mistakenly stripping out the finishing configuration (i.e. stapling), which is no longer the case.
- Print jobs originating from less traditional systems or with less common configuration may have not passed correctly through internal parser. YSoft SafeQ fully respects this and enables their printing.
- **Users** could use Terminal Pro 4 and the MFD even if their quota was zero. Fix has been put in place to make the quotas work properly.
- **Product security** has been improved. When installing YSoft SafeQ on an MFD, you may need to specify a password. These passwords are now stored in the database using a much better encrypted form.
- **Terminal Pro 4**, Unexpected outages were occurring a short time after midnight. This has been fixed and no longer occurs.
- **Users** can now clearly recognize their favorite jobs on Terminal Pro 4 even when the configuration shows all jobs in one folder (when Favorite tab is not displayed).
- **Administrators** updating to YSoft SafeQ 6 will no longer face an issue caused by misbehaving installation of an ABBYY component.
- As part of our effort to simplify YSoft SafeQ 6 **upgrades**, the process for migrating ORS to Site Server has been improved to create correct groups of Spooler Controllers.
- **PDF compression** did not work properly when running scan workflows with Xerox and Fuji Xerox MFDs.
- Combining two automatic workflow processing features: **Document separation** and **Remove blank pages** no longer confuses the product (no errors) and yields no blank pages and documents are split as expected.
- Accessing Billing Codes on Xerox MFDs from scan workflows led the user to the last page of billing codes which was not expected and users are no longer confused.
- **Fixed alignment** of embedded terminal authentication screen pieces for Samsung and Sharp MFDs.

- **Updating** to newer maintenance update and restarting Spooler Controller services no longer causes print jobs to appear "deleted".
- A **Performance** fix has been made to avoid bad behavior of Spooler Controller when working with Job Previews.
- SafeQ with embedded PostgreSQL database has many benefits. Apart from the simple installation, you also do not have to remember complex passwords. Embedded PG SQL supports a limited set of characters for database passwords and we make sure that you cannot enter a password that will not work during the installation (remember, you can choose from a combination of "a..z", "A..Z", "0-9" and a few special characters "!?{}()^,./[]~+\*". If you like your password with other special characters, we recommend using an external database, which brings even additional security for your data.
- Together with the previous point, we also **fixed** an issue when **installing external PostgreSQL** database server, so you can enjoy its benefits even more.
- **Web Reports** have not been correctly reporting the Device location and Device equipment number. Now you can just generate a list of locations and device equipment numbers (when you do not need the device name).

## 2. Known Limitations

### Installation and deployment

- Backup of YSoft SafeQ 6 (configuration, database and more) can be done using documented procedure. Please follow the product documentation for backup and restore.
- Automated data and configuration upgrade from YSoft SafeQ 5 is not supported. For any ad-hoc requests, please contact your Y Soft representative.
- FlexiSpooler in server mode and Spooler Controller components must be installed on the same server.
- YSoft Universal Print Driver supports
  - Windows 8.1 or newer
  - Windows Server 2012 or newer
  - Windows 2008 R2, Windows 7 and Windows Vista, generic (HP) driver can be used instead
- After updating FlexiSpooler in client mode, Offline Print capability needs to build new list of last used printers.

### Accounting and reporting

- Online accounting:
  - Online accounting of direct prints is not supported.

- Online accounting of fax is not supported.
- Offline accounting of copies using smart cable is not supported.
- Online print accounting with coverage accounting correction is not supported.
- Online accounting with Mobile terminal is not supported.
- Local print monitoring is not supported.
- Estimated price of a print job does not change after modification of Finishing options.

### **Embedded, External and Mobile Terminals**

- Legacy Terminal Professional v3.5 is not supported.
- Finishing options are not supported on the YSoft SafeQ Embedded Terminal for Samsung.
- Scan Workflows are available on the following vendors. Please refer to the product documentation for more details.
  - Fuji Xerox
  - Konica Minolta / Develop
  - OKI
  - Ricoh
  - Sharp
  - Toshiba
  - Xerox
- It is not possible to enable showing user's personal and virtual credit separately.
- Basic finishing options (Simplex/Duplex, BW/Color and Number of copies) are available on the following vendors. See product documentation for details.
  - Fuji Xerox
  - Konica Minolta
  - Lexmark
  - OKI
  - Ricoh
  - Sharp
  - Toshiba
  - Xerox

- Advanced finishing options (Stapling, Punching, Folding) are available on the following vendors. See product documentation for details.
  - Konica Minolta
  - Ricoh
  - Sharp
  - Xerox
- Any jobs submitted via Mobile Print or AP Connector do not support advanced finishing options.
- Not all of the Finishing options are supported on every device, for detailed information please see the documentation.
- YSoft SafeQ 5 Early Access features "Fax accounting", "Extended accounting of colors" and "Public user accounting" are currently not supported.
- YSoft Mobile Terminal does not support pay-for-print capability.
- Advanced finishing options are supported only when the YSoft Mobile Terminal is used on the devices with Embedded Terminals.
- Advanced finishing options are not supported on Terminal Pro 4.
- When deploying an software update package on Terminal Pro 4, change of IP address in Terminal Pro 4 settings is required prior to start the software update package deployment. The IP address of Management server is required. The change can be made via SSH client and connection to Terminal Pro 4.
- Terminal Pro 4 does not support Payment System and Offline Accounting.
- Terminal Pro 4 does not support Stop on zero.

## Printing and print processing

- YSoft SafeQ Desktop Interface with FlexiSpooler for MacOS is not supported.
- Desktop Interface notifications from Rule Based Engine work only with FlexiSpooler in client mode.
- Estimated price for the job is not displayed in the YSoft SafeQ Desktop Interface.
- Offline print is not supported the following Embedded Terminals:
  - Lexmark
  - Sharp
  - Samsung

## Scan Workflows

- Output format Compact PDF is not working properly in combination with any processing step. Scanned file is split in multiple pages.
- Concurrent upload of big files is not working reliably for some cloud connectors (SharePoint Online, Onedrive for Business, Dropbox).

## Printing through Mobile Print Server

- Character encoding of incoming email must match the encoding configured on the server containing FlexiSpooler used by Mobile Print Server in order to avoid job name with corrupted characters.
- After adjusting the page range, preview of PDF jobs sent via AP Connector is not generated from that page.

## SafeQube 2

- Only Konica Minolta, FujiXerox, Lexmark, Ricoh, Sharp and Xerox Embedded Terminals are supported with SafeQube 2.
- Terminal server will not start on SafeQube 2 when the WebDav Document Store is not configured. Make sure to manually create 'Ftp' and 'WebDav' folder in WebDAV root.
- Scanning on Fuji Xerox via SafeQube 2 is not supported.
- Near, Far Roaming and Offline Print are not supported with SafeQube 2.
- Only TLS 1.0 and SSL 3 are supported on SafeQube 2. MFDs with TLS 1.1 or TLS 1.2 only won't work via secured channel, but some of them can be configured to use HTTP.
- Administrator can not change SSL certificate on SafeQube 2.
- Double-byte characters are not supported.
- All ports must be configured above 1024.